



118 Nm

ALUMINIUM

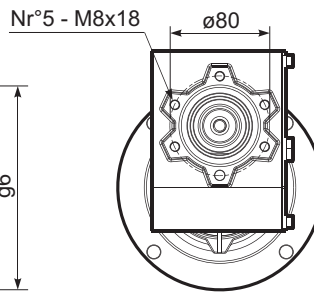
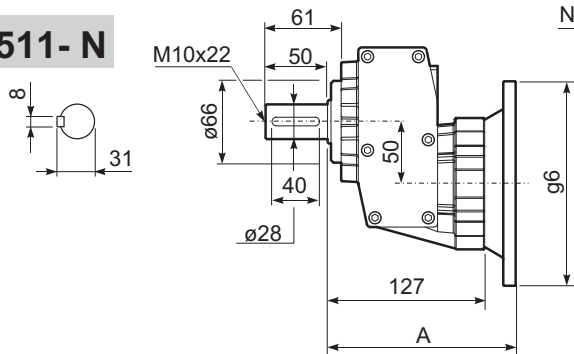
n ₂ [min ⁻¹]	i	P _{1M} [kW]	M _{2M} [Nm]	fs	P _{1R} [kW]	M _{2R} [Nm]		B5					B14					RD	 Ratios code		
								B	C	D	E	F	O	P	Q	R	T			U	V
								63	71	80	90	100 112	56	63	71	80	90	100 112	132		

511

n₁ = 1400 min⁻¹

1077	1.30	4	35	1.9	7.7	67	24/28	B											98	3039
571	2.45	4	66	1.9	7.4	122	24/28	B											98	2049
423	3.31	4	89	1.4	5.5	122	24/28	B											98	1653
325	4.31	4	115	1.2	4.6	133	24/28	B											98	1356
266	5.27	3	106	1.3	3.8	133	24/28	B											98	1158
183	7.63	2.2	112	1.0	2.2	114	24/28	B											98	861
133	10.50	1.1	77	1.0	1.1	79	24/28	B											98	663

P511-N



Type 511 (Motor flange)

Motor Flange	A	g6	k1
84 B14	145	7120	149,5
90 B14	145	140	149,5
100/112 B14	145	160	149,5
132 B14	175	200	188
71 B5	145	160	149,5
80/90 B5	147	200	151,5
100/112 B5	153	250	157,5

Flange uscita / Output flange

a1 Ø	b1	e1	c1	f1	s1
140	95	115	10	3	
160	110	130	10	3,5	
200	130	165	11	3,5	
250	180	215	11,5	3,5	

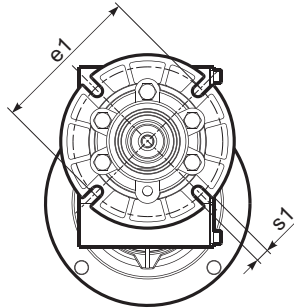
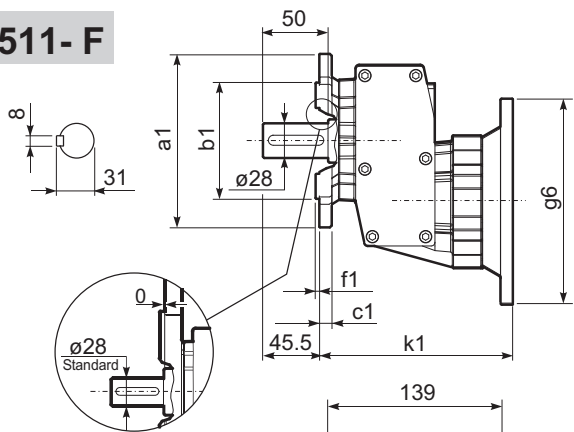
* Posizione fori / holes position

Ø Albero uscita / Ø Output uscita

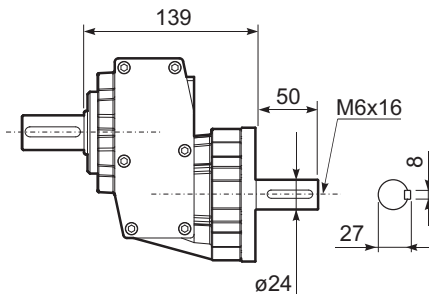
Standard	Ø 28x50
On request	Ø 24x50

Peso Weight 5.00 Kg

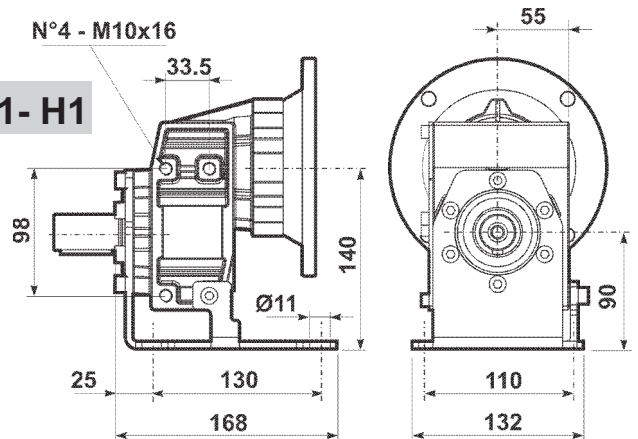
P511-F



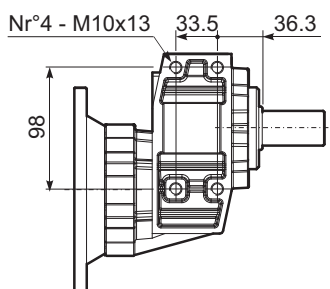
R511-N



R511-H1



P511-N



B) Montaggio con boccia di riduzione
Coupling by means of reduction bushing

C) Posizione fori flangia/basetta motore
Motor flange/terminal box position