

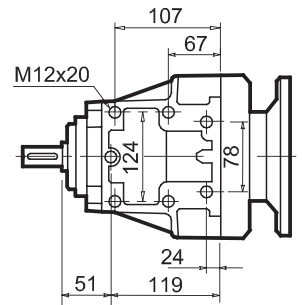
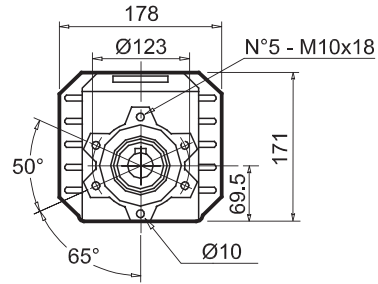
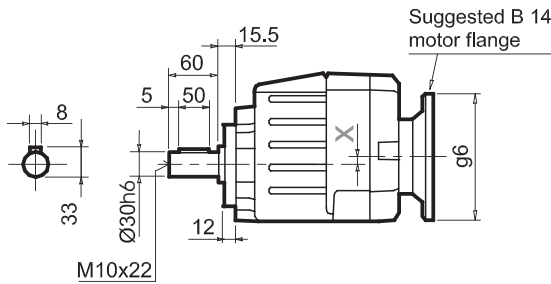


	502A	503A
X	5.3	15

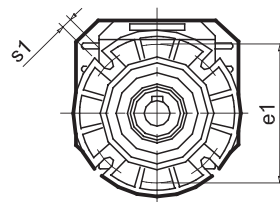
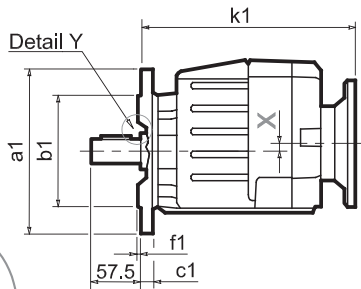
	502A	503A
--	------	------

<b>Kg with flange</b>	11.7	11.9
<b>Kg with feet</b>	11.9	12.1

P502A-N  
P503A-N

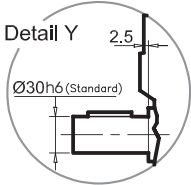


P502A-F  
P503A-F



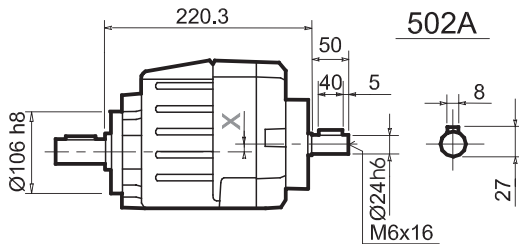
Flange uscita / Output flange

a1 Ø	b1	e1	c1	f1	s1
160	110	130	14	3.5	9
200	130	165	13	3.5	11
250	180	215	15.5	4	14

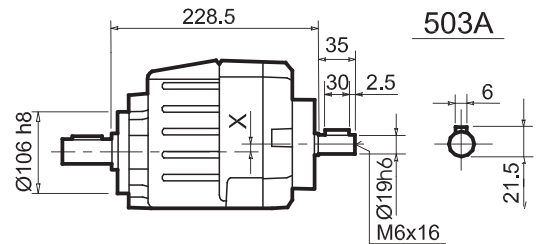


Ø Albero uscita / Output shaft	Standard	Ø 30x60
	On request	Ø 28x60 Ø 35x60

R502A-N  
R503A-N

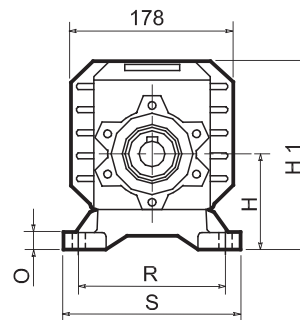
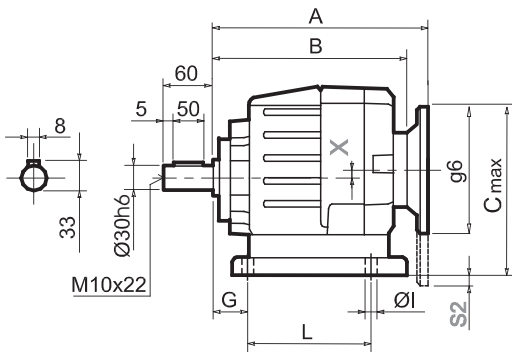


502A



503A

P502A....  
P503A....



Type 502A (Motor flange)

Motor Flange	A	B	C max	g6	k1
80 B14	226	207.5	207.3	120	228.5
90 B14	226		217.3	140	228.5
100 112 B14	237		227.3	160	243.2
71 B5	226		227.3	160	228.5
80/90 B5	228	234	247.3	200	230.5
100 112 B5	234		272.3	250	236.5
132 B14	255.5	216	247	200	264

Type 503A (Motor flange)

Motor Flange	A	B	C max	g6	k1
71 B14	234.5	216	209.5	105	237
80 B14	235.5		217	120	238
90 B14	236.5		227	140	239
63 B5	236.5		227	140	239
71 B5	234.5	234.5	237	160	237
80/90 B5	236.5		257	200	239

Piedi di fissaggio disponibili / Available feet dimensions

Market reference	Feet Code:	G	H	R	L	S	H 1	O	Ø	S2 With motor flange	B5 max. flange
302/3	B3	18	110	160	130	190	211.5	20	11	10 100/112 B5	
30 / 35	B4	20	130	180	149.5	216	231.5	18	14		
47 - 57	S4	30	115	135	165	170	216.5	24	13.5	5 100/112 B5	
023 - 233	H 3	30	130	135	135	185	231.5	25	14		
06	L 6	19	125	160	106	205	226.5	8	14		
2202/3	E 2	13	100	135	192	164	201.5	6	14		80/90 B5
52/3	M2	30	110	135-150	100	190	211.5	18	11	10 100/112 B5	
142	P 4	35	142	130	145	160	243.5	8	14		
4100-05G	J 3	25	100	150	90	180	201.5	8	14	20 100/112 B5	

Controllare le misure principali (G - H - R - L) troverete i codici (B1 - S1 - ecc.) corrispondenti alle dimensioni di vostro utilizzo.

Checking the main dimensions (G - H - R - L) you will find the codes (S1 - B1 - etc.) of your need

Tipi più diffusi / Most popular types